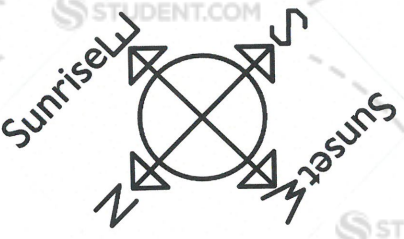
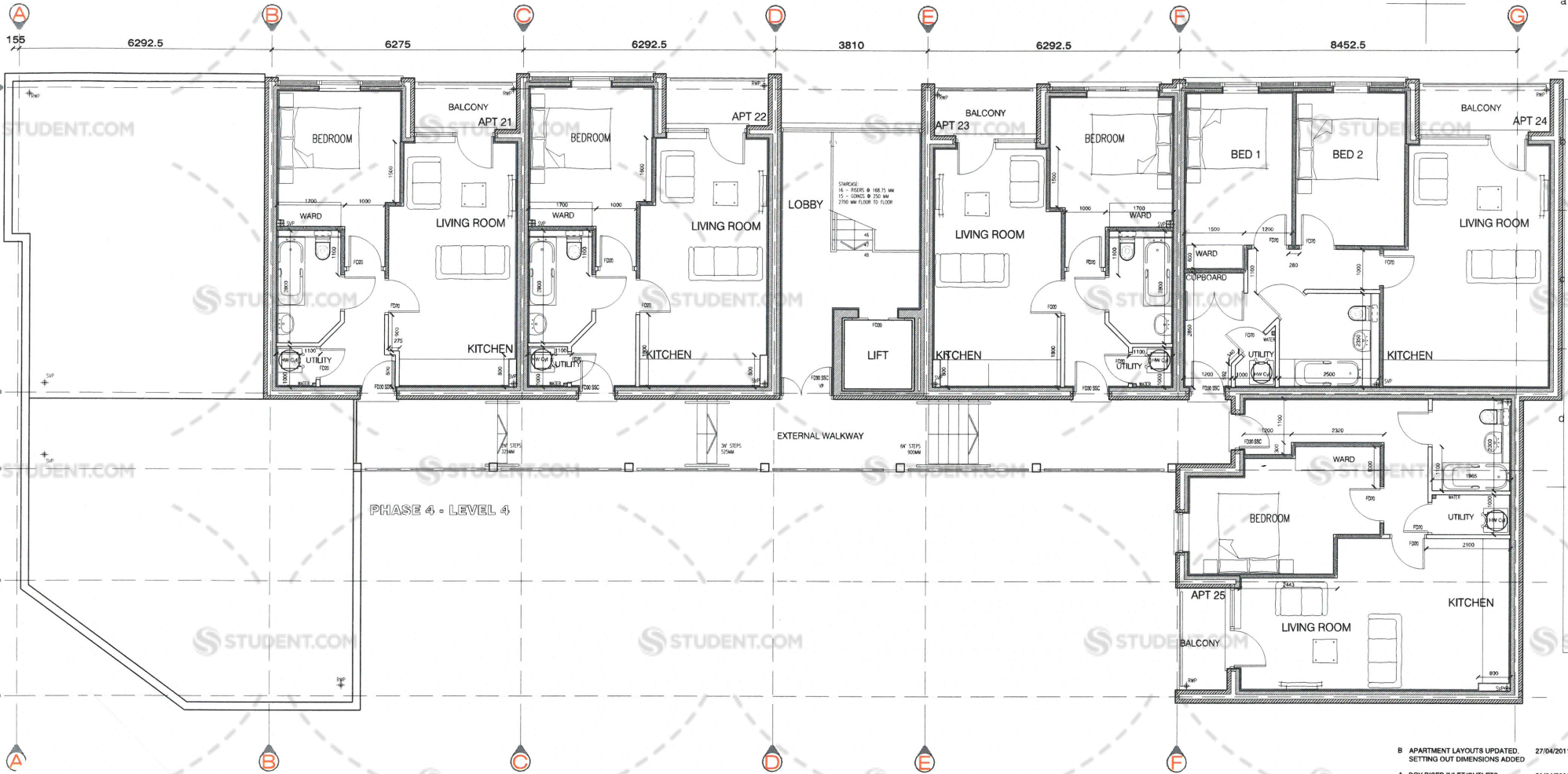


1 | 2 | 3 | 4 | 5 | 6 | 7 | 10 | 11 | 12 | 13 | 14 | 15 | 16

**RESIDUAL RISK**  
 Wherever possible, unnecessary risk is designed out of these proposals. Where residual risk remains this is addressed and identified on the relevant drawings with this symbol. Refer to the note and the relevant measures in the Health & Safety documentation.



B APARTMENT LAYOUTS UPDATED, SETTING OUT DIMENSIONS ADDED 27/04/2011

A DRY RISER INLET/OUTLETS LOCATION REVISED, EXTERNAL STAIRS REVISED, LINING ADDED TO BLOCKWORK WALL, KITCHEN LAYOUTS SIMPLIFIED, FLAT CONFIGURATION AT GRIDS F-G REVISED. 21/04/2011



Talbot Chambers 2-8 North Church Street, Sheffield S1 2QH  
 Tel: +44(0)114 246044 Fax: +44(0)114 246050 www.axis-architecture.com

**PHASE 4**  
 MELLOR HOUSE  
 SOLLY STREET  
 TURNKEY SOLUTIONS

**GA PLAN**  
 LEVEL 4  
 All Scale: All Scale Date: APRIL 2011 A X 1 S  
 Drawing Number: 26475 A(01)04 B

© COPYRIGHT EXISTS ON ALL DESIGN AND INFORMATION SHOWN. DO NOT SCALE for construction and verify all dimensions prior to manufacture.